

NEW!



## *A-Series Mechanical Pipette*

# A-Series Mechanical Pipette



Ushering in a new age of traceability research, the A-Series Mechanical Pipette is a new line of pipettes aimed at improving ergonomics and comfort while maintaining its accuracy and reliability.

## KEY FEATURES

### Control Button

- Very low operating force
- Colour-coded based on volume
- Positioned for perfect ergonomics

### Volume Adjustment

- Turn to adjust volume

### Ejector

- Low tip ejection force of less than or equal to 4 newtons
- Positioned for perfect ergonomics

### Volume Display

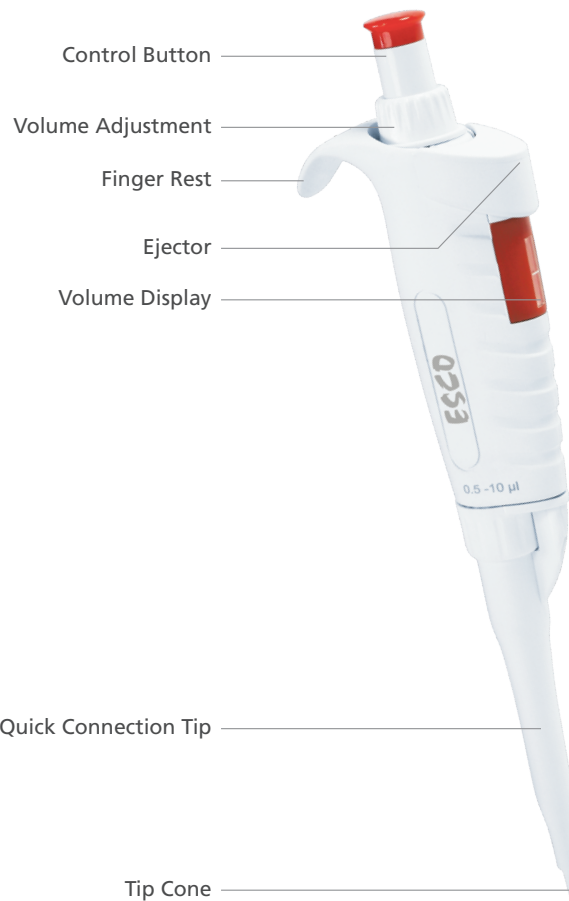
- 4-digit display
- Magnified for comfortable viewing

### Quick Connection Tip

- Remove lower part quickly

### Tip Cone

- Spring-loaded tip cone for ease of connecting and ejecting pipette tips



## PRODUCT FEATURES

- 4-digit volume display
- Magnified display for comfortable viewing
- Chemical resistant
- Up to 121°C sterilization
- Very low operating force
- Colour-coded according to volume
- Positioned for perfect ergonomics
- Turn to adjust volume
- Antimicrobial surface
- No need for greasing of the pipette piston after autoclaving
- Autoclavable
- With calibration keys and shelf clips
- Single-channel pipette



## Ordering Information

### Pipette

ITEM CODE	Model Code	Volume Range	Accuracy	Repeatability
5171116	A2	0.1-2 $\mu$ l	$\pm$ 12.0-1.5%	$\leq$ 6.00-0.70%
5171117	A10	0.5-10 $\mu$ l	$\pm$ 2.5-1.0%	$\leq$ 1.50-0.40%
5171118	A20	2-20 $\mu$ l	$\pm$ 2.5-1.0%	$\leq$ 1.50-0.30%
5171119	A100	10-100 $\mu$ l	$\pm$ 1.8-0.8%	$\leq$ 0.50-0.15%
5171120	A200	20-200 $\mu$ l	$\pm$ 1.8-0.6%	$\leq$ 0.50-0.15%
5171121	A1000	100-1000 $\mu$ l	$\pm$ 1.5-0.6%	$\leq$ 0.30-0.15%
5171122	A5000	500-5000 $\mu$ l	$\pm$ 1.2-0.6%	$\leq$ 0.30-0.15%
5171123	A10mL	1-10mL	$\pm$ 2.5-0.6%	$\leq$ 0.30-0.15%

# Technical Specifications

## VARIABLE VOLUMES FOR A-SERIES MECHANICAL PIPETTE

Accuracy and repeatability values should be tested six (6) times.

Type	Model	Nominal Volume (µl)	Tolerance Allowed %	Repeatability
Adjustable Volume	A2	0.2 1 2	±10 ±2.5 ±1.5	≤6.00 ≤2.00 ≤0.70
	A10	1 5 10	±2.5 ±1.5 ±1.0	≤1.25 ≤0.60 ≤0.40
	A20	2 10 20	±5.0 ±1.0 ±1.0	≤1.50 ≤0.50 ≤0.30
	A100	10 50 100	±2.0 ±0.8 ±0.8	≤0.60 ≤0.24 ≤0.15
	A200	20 100 200	±1.5 ±0.8 ±0.6	≤0.50 ≤0.25 ≤0.15
	A1000	100 500 1000	±1.8 ±0.8 ±0.6	≤0.40 ≤0.25 ≤0.15
	A5000	1000 2000 5000	±2.0 ±0.8 ±0.6	≤0.30 ≤0.25 ≤0.16
	A10ml	1 ml 5 ml 10 ml	±2.5 ±0.8 ±0.6	≤0.60 ≤0.20 ≤0.16



## A-Series Mechanical Pipette Pipette Stand

Enjoy an organized workplace with our rotating pipette stand. Pipettes are attached to the stand by the handle and not the nose cone, ruling out potential cross-contamination from the stand to the pipettes.

Equipped with our own production facilities, we are able to maintain the highest standards in the selection and processing of plastic materials.

### PRODUCT FEATURES

- Suitable for A-Series pipettes
- Able to hold up to 9 pipettes
- Made of sturdy, easy-to-clean material
- Anti-slip base pads
- Innovative design for easy reach

## Ordering Information

Item Code	Description	Quantity	Gross Weight	Dimension
1150496	PIPETTE STAND	1 pc	11 kg	74x48x48 cm
5171124	PIPETTE STAND, 1pack	20 pcs	30 kg	470x470x470 cm

## Accessories

### Tip Box

Our tip box and slot can improve work efficiency during tip fitting and ejection. It has a robust design technology with a consistent wall thickness suitable for repetitive use in both single and/or multi-channel pipette.

### PRODUCT FEATURES

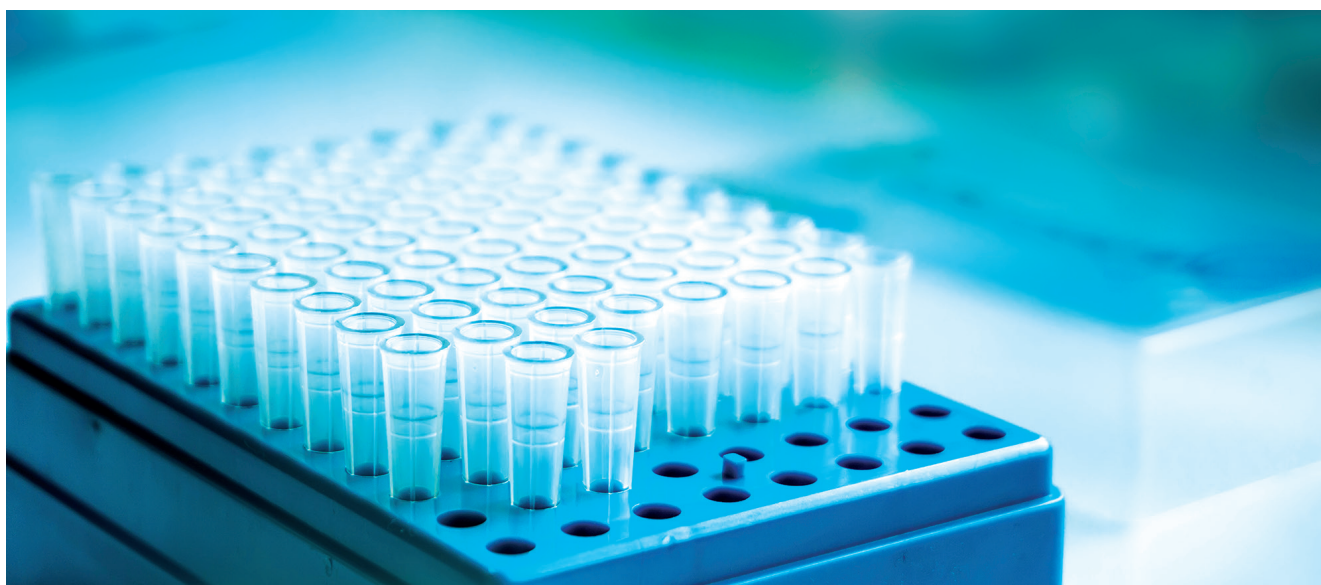
- Transparent top and bottom cover which provides an excellent view of the tips inside
- Manufactured in high-quality polypropylene (PP)
- Boxes are stackable
- Refillable



## Ordering Information

Item Code	Model	Quantity	Gross Weight	Dimension
TBA	96 wells x 10 µl	100 pcs	9.0 kg	47x44x27 cm
TBA	96 wells x 200 µl	100 pcs	9.5 kg	47x44x27 cm
TBA	100 wells x 100 µl	100 pcs	15.0 kg	57x54x51 cm
TBA	50 ml	300 pcs	9.0 kg	45x36x35 cm

## Pipette Tip



A pipette is only as good as its tip. Only a perfectly manufactured pipette tip can ensure that the precision of a modern pipette is maximized. Esco pipette tips have been developed to work in perfect combination with our A-Series Mechanical Pipette. Additionally, the universal nose cone design allows the tips to be used with pipettes from other manufacturers.

## Ordering Information

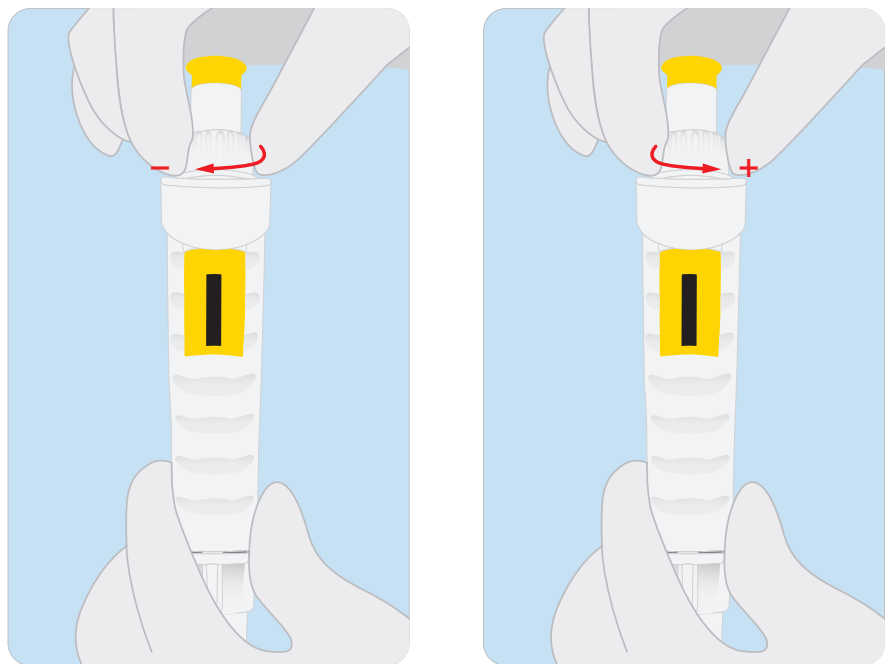
Item Code	Model	Volume Range	Quantity	Gross Weight	Dimension
TBA	A10	0.1-10 µl	30000 pcs	6.0 kg	36x23x30 cm
TBA	A200	2-200 µl	20000 pcs	8.0 kg	36x23x30 cm
TBA	A1000	100-1000 µl	10000 pcs	15.0 kg	60x40x36 cm
TBA	A5000	1000-5000 µl	2000 pcs	8.0 kg	41x31x37 cm
TBA	A10ml	1-10 ml	1500 pcs	9.0 kg	41x31x37 cm

# Calibration Guide

## Number Display Settings For Volume Adjustment

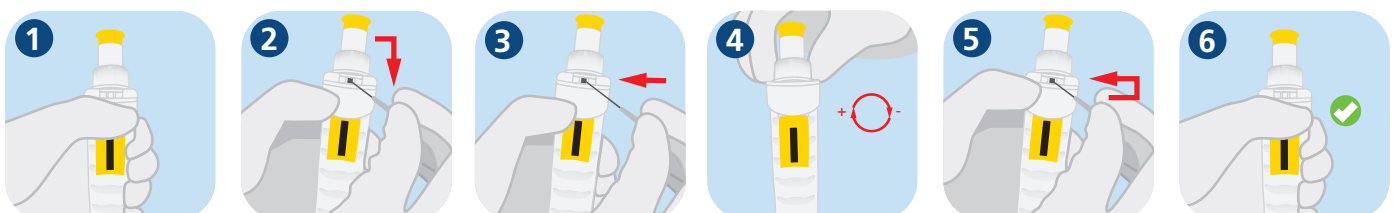
A2	A10	A20	A100	A200	A1000	A5000	A10ml
2	1	2	1	2	1	5	1
0	0	0	0	0	0	0	0
0	0	0	0	0	0	0	0
0	0	0	0	0	0	0	0
2 $\mu$ l	10 $\mu$ l	20 $\mu$ l	100 $\mu$ l	200 $\mu$ l	1000 $\mu$ l	5000 $\mu$ l	10ml

### Volume Adjustment Method

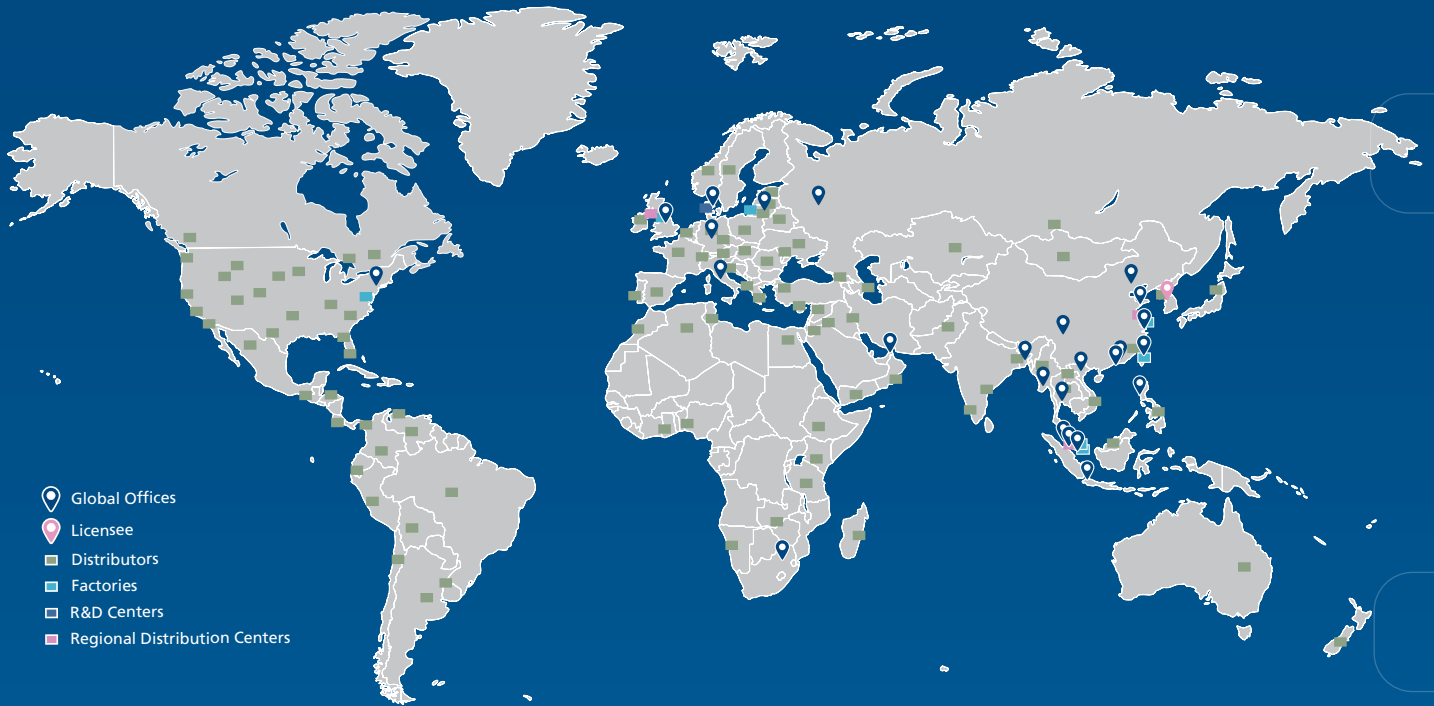


## Calibration Method

1. Depress the ejector button to the stop, don't release (Picture 1).
2. Use a sharp tool to turn the white plastic part left (Picture 2), after that, push down and turn left, embedding the white plastic part in slot (Picture 3).
3. Press the volume adjustment that is kept constant between weight and volume (Picture 4).
4. Turn right, push up and turn the white plastic part left in slot (Picture 5).
5. Calibration is done (Picture 6).



**ESCO LIFESCIENCES GROUP**  
42 LOCATIONS IN 21 COUNTRIES ALL OVER THE WORLD



*Follow us on social media, download our apps,  
and scan the QR code for more info.*



@Escolifesciences



@Escolifesciences



@Escolifesci



@Esco



@Escolifesciences



@Escolifesciences



Esco Lifesciences



Esco Lifesciences

**ESCO**<sup>®</sup>  
LIFESCIENCES GROUP

Esco Micro Pte. Ltd. • 19 Changi South Street 1 • Singapore 486 779  
Tel +65 6542 0833 • mail@escolifesciences.com  
www.escolifesciences.com

Esco Technologies, Inc. • 903 Sheehy Drive, Suite F, Horsham, PA 19044, USA  
Tel: +1 215-441-9661 • Fax 484-698-7757  
eti.admin@escolifesciences.com

Esco Lifesciences Group Offices: Bangladesh | China | Denmark | Germany | Hong Kong | India | Indonesia | Italy | Japan | Lithuania  
| Malaysia | Myanmar | Philippines | Russia | Singapore | South Africa | South Korea | Taiwan | Thailand | UAE | UK | USA | Vietnam